

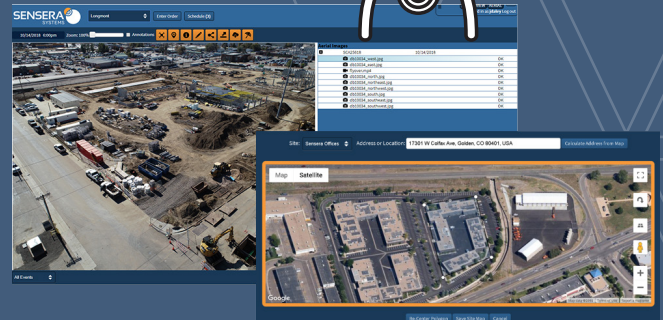
# SiteCloud-AERIAL

Drone Photography Services

## Site Mapping & Project Progress

### Simple, Turn-key Aerial Photography

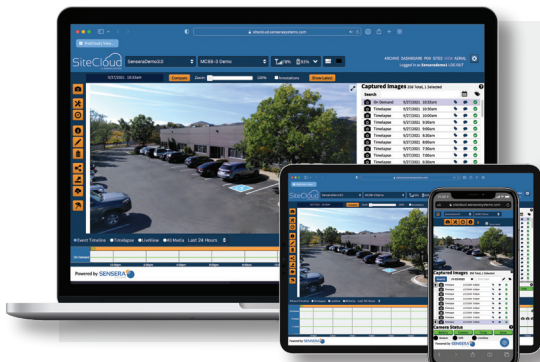
SiteCloud-AERIAL is a turn-key drone photography service for site mapping and project progress documentation. Combined with SiteCloud software, this service provides complete image capture, archival, sharing and workflow. SiteCloud-AERIAL simplifies aerial photo documentation, eliminating the need for Part-107 certification training, owning, maintaining, and transporting drone equipment, offloading and uploading photos, and the need for 3rd party software for archival and sharing.



### How it Works

For complete visual documentation, order SiteCloud-AERIAL at the start of your project, when ordering your cameras and SiteCloud software and service. Simply provide the address of your jobsite and we will confirm that the site is legally flyable. Flights will be set on a nominal schedule which you can modify at any time from your SiteCloud dashboard. The dashboard shows the status of upcoming and completed flights, and imagery from each flight is uploaded to your account automatically upon flight completion. Images are then available alongside your other camera and SitePOV mobile app imagery for markup, export and public page sharing.

SiteCloud-AERIAL imagery can be transferred automatically to your Construction Management Software System for permanent archival, issues documentation, sharing, and more. Currently supported software includes: Procore®, Autodesk® Construction Cloud, and PlanGrid.



Sensera's SiteCloud platform provides easy-to-use software for viewing, monitoring, and sharing real-time site data, detecting actionable insights, and simplifying work-flow. SiteCloud is tightly integrated with Sensera's complete line of jobsite cameras, mobile apps, and SiteCloud-AERIAL™ drone photography services to provide comprehensive automated site monitoring from a simple web interface.

## Site Mapping & Project Progress

### FEATURES

- High Resolution 12MP Stills, 1080p Video Imagery
- Near-real-time Flight Status
- Automatic Notification of Flight Completion
- No-touch Image Upload, Archival, Sharing
- Image Markup
- Automatic Workflow to Autodesk Construction Cloud, PlanGrid, Procore
- Fully Insured
- Reschedule Flights to Match Project Milestones
- Automated Credit/Rescheduling for Weather-scrubbed Flights

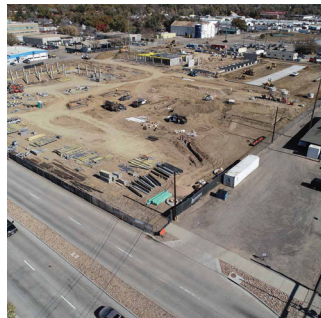
### ORDERING

<b>SA-SP03</b>	Photo Flight: 3-6 flights (minimum 3 flights)
<b>SA-SP07</b>	Photo Flight: 7-11 flights
<b>SA-SPI2</b>	Photo Flight: 12+ flights
<b>SA-SV03</b>	Photo + Video Flight
<b>SA-SV07</b>	Photo + Video Flight: 7-11 flights
<b>SA-SV12</b>	Photo + Video Flight: 12+ flights
<b>Photo Flights</b>	(8) still images from cardinal directions
<b>Photo + Video Flights</b>	(8) still images from cardinal directions and (1) 360° flyover video

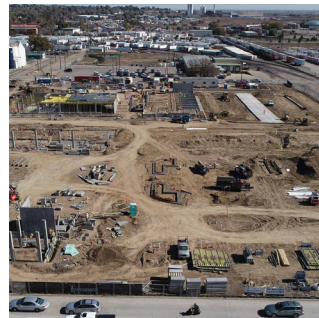
### Photo Flight: 8 images from cardinal directions



North



Northeast



East



Southeast



South



Southwest



West



Northwest

SPECIFICATIONS SUBJECT TO CHANGE  
Images are for illustration purposes only

Made in the USA